



**November 27th - December 3rd  
2022**

**BULLETIN 1**

## CHILE

**Chile** is situated in the southwestern tip of South America between the Andes and the Pacific Ocean.

Its extensive length (4,200 kilometers, similar to a tour of Europe from Lisbon to Moscow) offers a huge variety of landscapes and climates throughout its territory, from the Atacama Desert -the driest in the world - in the far north to Patagonia's millennia-old glaciers in the south.

### NORTH AREA



This enormous area spans the **Atacama Desert**, the most arid in the world, with its salt mines, thermal baths and geysers, great mines of copper such as the Chuquicamata in **Calama** and others with different minerals at high altitudes in the **Altiplano** and fertile gorges and oasis whose unique fruits invite to gastronomic tours.

In the **altiplano**, home of Native people, the Inca and Spanish influence is based on old towns and religious festivities which today continue calling a great number of the faithful in different parts of the year. Here you will find valuable remains of the native cultures in archeological sites and museums, as the one in **San Pedro de Atacama** and attractive cities in the coastline as **Arica, Iquique, Antofagasta, Coquimbo** and **La Serena**, which you will be delighted for its beaches and good climate, warm and smooth. In the desert, in winter, the weather changes, the temperature varies from -7°C to 26°C between night and day.

## CENTRAL AREA

You just need to land in **Santiago**, the capital city of Chile, to notice that the main city of this nation is a mixture of senses. Set in the lap of the Cordillera de Los Andes and lined with the Mapocho River, this old valley discovered by the Spanish colonizer Pedro de Valdivia in 1541, has become an important and modern centre of business on a continental level, with a full offer of hotels and restaurants of first level, top notch technology and access to multiple services: the starting point ideal for trips to the rest of the country.

**Santiago** is a box of surprises to discover. There's much more of what you think as in its streets and neighborhoods lives the identity of the globalized 21<sup>st</sup> century with the most firmly rooted local traditions. You will find from small cafes with wi-fi, top brand stores, good bookstores and fine handicraft shops to big shopping centres or long blocks with various brand stores. You just need to ask some of the more six million people living in this metropolis to obtain a range of diverse options and choose according to your preferences.



In Santiago you will always have

something to do, depending on the season of the year: the summer opens the doors to the seaside with **Valparaíso and Viña del Mar** (a bit more than an hour drive) as the best cards of a pack play. In winter, the

gemstone is the ski centres, 40 kms. from the city. In spring, the national festivities – “el 18”, are the delight for the visitors and the autumn is ideal for living the grape harvest in the central valleys, with a cup of good wine in your hand.

## SOUTH AREA



After passing the 400 kms. to the south of **Santiago**, you will begin to feel the difference. There it's the city of Chillan with its traditions and history, and laps of the Nevados de Chillan, with its ski centers and thermal baths. But beyond the Bio Bio River and for other 800 kms to **Castro** in the island of **Chiloé**, the

landscape turns wild, the vegetation

covers everything and the green is expressed in a thousand tints. Here, life runs at a different pace, more paused and along with the creak of the ladders in the fireplace. The rain falls and cleans the sky which turns into a deep blue. It smells like forest and humid soil. The people are warm and hospitable. They live on the agriculture and stockbreeding and the wood.

Welcome to the south of Chile, a territory of great landscaping beauty which includes the **Region of Bío Bío, La Araucanía, Los Ríos** and **Los Lagos**.

Accessible through modern highways, **Chillán, Concepción, Temuco, Valdivia, Osorno, Puerto Varas** and **Puerto Montt** are its main cities. In winter, for skiing and living by the

lake, in summer you can't miss **Villarrica** and **Pucón**. Also, the archipelago of Chiloé is a place where time seems to stand still and yet ancient traditions are alive.

## **PATAGONIA AND ISLANDS**

Over 500 years have passed since the **Patagonia** was discovered and the names for describing it continue being similar to the words used by the first explorers and naturalists: exotic, distant, extensive, of infinite beauty, wild and indomitable.



Imagine yourself immersed in a location of 240,000 km<sup>2</sup> of surface, that is, the size of a country as the United Kingdom, but where the population is not greater than one inhabitant per km<sup>2</sup> and where the 50% of the territory is a protected wild area. In the Chilean **Patagonia**, it's you and the wild nature where you can inspire with its landscapes and do activities as **fly fishing, trekking, cycling, mountaineering, rafting, kayak and horseback riding.**

Here you will be surprised by the immensity of **Campos de Hielo** (Fields of Ice) where glaciers of great beauty descend, the majesty of its mountains as **Torres del Paine** (Paine Towers), **San Valentín and Cerro Castillo**, the colourful and extension of its lakes as **General Carrera and O'Higgins**, the large rivers as the **Baker, Palena and Futaleufú**, the variety of ecosystems which go from impenetrable forests to extensive steppes and the huge labyrinth of channels and fiords waiting for you to sail and also watch dolphins and whales.

Between so much nature, pioneer cities and towns appear as **Coyhaique**, **Punta Arenas** and **Puerto Natales**, where you can take a breath a stockbreeding history and the Patagon gaucho lifestyle, fiords, glaciers, forests and steppes in one of the few places in the world which are still unchanged: **the Chilean Patagonia**.

## ISLANDS



Of the hundreds of islands that **Chile** owns, there are three which take the preferences of the visitors and the ones you can travel to with greater facility: **Easter Island**, **Robinson Crusoe** and **Chiloé**, the first two very far from the continent in the middle of the Pacific Ocean, and Chiloé, the largest of these islands, distant only 30 minutes in a ferry from **Puerto Montt**.

**Easter Island** or Hanga Roa, in its native language, is one of the most exotic locations of the country. In the same latitude of Caldera, but thousands of kilometres far from the coast, its native culture has been motivation of admiration because of the great lithic monuments, **the Moais**, with more than 800 years old which populate a volcanic geography surrounded by wonderful beaches. The **native culture** is still alive and attracts thousands of visitors with good hotels and restaurants in the “*world’s navel*”.



## THE CLIMATE:

Summer temperatures in Santiago, the capital city, are often over 30°C (86°F) during the day, but drop at night to around 15°C (59°F). In mid-winter the Andes become an irresistible destination for skiers, with snow beckoning between June and October. Rainfall increases during the coldest winter months and temperatures may fall to 8°C (46.4°F), so warm and waterproof clothes are advisable

## THE CHILEAN

The Chilean is known for the way of speaking Spanish rapidly and pronouncing a little or almost nothing the final letters such as the “s”, including a variety of idioms and invented words which always renew and include a strong dose of humour and naughtiness. The traveler can be confused a bit with this way of speaking, but the locals are happy to make you understand and know the meaning and use.

Visually the most distinctive physical features are the brown or matt colour of the skin, a medium height (1,60 m women - 1,70 m men), black hair and medium and thick build.

Also, we can characterize the Chilean people as jointly liable, kind and well-meaning with the foreigners. In great national disgraces as earthquakes or the case of the 33 miners, the national spirit has the tendency to the **unity and solidarity**.

In the same way, Chileans have a wide religious respect, visible in the greatest celebrations dedicated to the Virgin Mary, in the case of Catholics, or in the Protestant Te Deums. Also, there’s a respect for the public, police and economic institutions. Despite **Chile** has been considered as one of the most conservative nations in South America, a greater opening towards the sexual, religious and social minorities has been developed during the last two decades together with a sustained economic growth and a greater opening to foreign parts.

## Language

**Spanish** is the official language of **Chile**. However, there is an idiomatic variation that “*chilenizes*” the Spanish giving it new words and senses. In Chile, it’s also spoken the **mapudungun** (mapuche language), **aymara** in the Andes region of the north of the country and **rapanui** in the Polynesian Easter Island.

## Religion

According to the last census of 2002, 7.853.428 of the Chileans over 15 ascribes to a religious faith with 69,96% identifying with the Catholic of the total population. A 15,14% as Protestant, a 1,06% Jehovah’s witness, a 0,92% as Mormon and a 0,13% as Jewish. An 8,3% of the country declares atheistic or agnostic, while a 4.39% declares to ascribe to other religions.

## Customs

**Festivities:** Chile is a country of festivities which mainly have two reasons: the religious ones and the ones concerning anniversaries of cities or towns, mainly in summer season. There are many others throughout the length and breadth of the country, however, on a national level we can enhance the rodeo in which a couple of “huasos” horseback riding chases and stop a heifer that is one of the most representative

countryside festivities of Chile. Special days are the 18th and 19th of September, national holidays in which the First Governing Body in 1810 was proclaimed, the national independence genesis and the Glories of the Army. In these dates, many popular celebrations are held in parks or sites where several shops or “ramadas” are set with typical food and traditional dances.

Colorful religious festivities, with aymaras, incas y catholic roots, abound in the north area, in the Atacama desert and towns of the Altiplano, being **La Fiesta de La Tirana** the most famous. Also, in Chiloé ("tiradura de casas" or “pulling houses”), in fishing coves (Saint Peter Festivity), cities as Valdivia (Valdivian Week) or Valparaíso (great fireworks Festivity and lighted ships on December 31), in the fields of the central area (Threshing Festivity) and in the wine producer valleys (grape harvest festivities).



## Food:

In Chile a simple breakfast, a more abundant lunch and the “once” or teatime which occurs between 5 and 6 p.m and that is usually replacing the dinner are eaten. Bread is a fundamental ingredient in the diet of the Chilean people, the most popular are the hallullas, the dobladitas and the marraquetas also known as French bread.

Among the local most famous dishes is the **cazuela** (abundant beef or chicken soup which includes a piece of pumpkin, a potato, a piece of corn, runner beans and rice), the **porotos con riendas** (the "riendas" are noodles), the humitas (boiled and mashed corn with onion and wrapped with the plant leaves)), the **pastel de choclo** (similar but cooked in the oven in clay serving dishes, traditional handcraft of the central and south area of Chile) and the **empanadas** de pino (mass filled with meat, onion boiled egg, raisins and olives) or seafood empanada, besides abundant dishes based on fresh **fish** and **seafood** and **the curanto** of Chiloé (baking potatoes, chicken, meat and sausages in a large earthen pit lined with hot stones and covered with “nalcas” leaves to keep in the heat and to be cooked with the steam).

In the regular Chilean food, the most popular ingredients are the meats and seafood, rice, potatoes and gourd, onions and garlic, tomatoes and green vegetables such as lettuce, coriander and parsley. The most used spices at Chilean homes are chili



(paprika), garlic and cumin. Lately, **the merkén** – a typical mapuche spice – is being popular which consist of a chili called “cacho de cabra” (goat horn) because of its size, dried, smoked, and ground and spiced with coriander seed. Today it’s a export product.

Among the most highlighted drinks are the **wine**, the **pisco** (grape distilled) and the **chicha** (apples or grapes handcraft fermentation). As a dessert, the mote (boiled wheat) with huesillos (dehydrated peaches in syrup). Among the sándwiches, Chilean especially, there’s an enormous variety of types and names: the “*chacarero*”, beef with tomaotes, runner beans and chili (optional), the “*lomitos*” derived from the traditions of the German colonizers (cooked pork meat with mayonnaise, avocado, tomato or chukrut), the traditional Barros Jarpa (ham and melted cheese) and Barros Luco (beef meat with melted cheese), these two names mentioning politicians from the beginning of the 20th century, and the “*completos*”, popular Chilean increased and corrected version of the American hot dogs (sausage, chipped tomato, mayonnaise, avocado, chukrut).



## Sports:

The **rodeo** is the national sport (not proved yet which is more popular, rodeo or football), that is practiced in a “media luna – half moon – (similar to a bullring, but smaller) where a couple of huasos horseback riding chase and stop heifers and summing points.



**Football** (soccer), however, is a everyday topic and concentrates the domestic looks and news, the most popular football teams are COLO-COLO, Universidad de Chile and Universidad Catolica, although there are other local teams in Chile, in cities, towns, villages and neighborhoods, all of them with passionate fans.

## Handicraft:

## 2022 IWWF WATERSKI PANAMERICAN CHAMPIONSHIPS

The most known handicraft for the tourists is the one made with **lapislázuli**, a blue gemstone taken from the mountains in the Coquimbo Region. Although it's quite industrialized, the work with this stone is reflected in jewelry and ornaments with figures of animals, jars and mosaics. Lapislazúli only exists in Chile and Afghanistan.

But **Chile** has craftsmen in all its territory who creates pieces of high cultural and artistic value in woven materials of **wool** (alpaca, vicuña, sheep) boiled **clay, volcanic stones, dyed horsehair** jewels, **carved native wood** and metal objects as **copper** and silver. The Chilean native handicraft is one of the few which still keeps traditional techniques of craft, dyed with natural dyeing from roots and fruits and 100% handicraft work.

Chilean people are used to meeting the families or friends to celebrate for any reason, there are no excuses. Although the current economic and social system seems to value the external rather than the internal (social status, top apparel and cars, neighborhood where you live in, access to consumer goods and educational level according to the social stratification given by the social prestige of schools and universities), Chileans are generally fond of the geography and nature of the country, considering the Cordillera de Los Andes, the Easter Island, the Atacama Desert, the lakes and volcanoes, the fishing coves, the Island of Chiloé and the Patagonia as the most representative of the nationality. And above all, they recognize and appreciate a fighting collective spirit, jointly liable and optimistic facing the difficulties that their nature presents which for its topography (living hanging between the Cordillera de Los Andes and the Pacific Ocean) and its situation concerning the Nazca and South American Plates are many and very frequent.

### Metric System

The units of measurement used in **Chile** of length, volume, weight and area correspond to the metric



2022 IWWF WATERSKI PANAMERICAN  
CHAMPIONSHIPS

system: meters and kilometres, liters, kilos, grams and milligrams, square centimetres, meters and kilometres and hectares.

**BULLETIN # 1**

**The Site:**

The event will be held at the site Lago Los Morros, Commune San Bernardo, Camino

**Federación de Esquí Náutico de Chile**

2022 IWWF WATERSKI PANAMERICAN  
CHAMPIONSHIPS



Nos 11333, it is 30 minute-drive from the capital, approximately 25kms.

A man-made lake designed exclusively for the waterskiing practice with a diameter of 700 meters long and 70 meters wide. Most of the National tournaments have been held there as well as it has been selected to be the site for International Championships such as:

**-IWWF Junior World**

**Championships**

- **IWWF Under 21 World Championships**
- **IWWF Pan American Championships**
- **IWWF Latin American Championships**
- **FISU University World Championships**
- **IWWF World Waterski Championships**

To get to the site in the Waze application you must enter the search bar Miranda Ski School (Camino Nos Los Morros, San Bernardo, Chile)

Please visit [www.esquinautico.cl](http://www.esquinautico.cl) for information contained in Bulletin #1.

**Intention to Enter**

The Organizing Committee kindly asks you to submit the Intent to enter List at [esquichile@gmail.com](mailto:esquichile@gmail.com) **within 29<sup>th</sup> September, 2022** without penalty.

**Definitive Entry Form**

-Registration for the event will cost USD 300 per participant and will have to be paid at the site BEFORE the event starts on November 27, 2022 (Cash only).

**Federación de Esquí Náutico de Chile**

2022 IWWF WATERSKI PANAMERICAN  
CHAMPIONSHIPS

-The final SKIER'S LIST who will participate must be done by a National EMS Federation Administration in the EMS system NO LATER than October 27, 2022.

-After this date, for the late submission of the registration, a penalty fee of USD 10.00 per day per athlete will be applied.

-The registration of the Skier participations in EMS can be done as follows:

1. The EMS Federation Administrator has to login to EMS.
2. Go to the Competitions menu and set the Code "23PANA" and the Country "Chile" in the Search Filters.
3. Select the 23PANA01 Panam Waterski Championship competition
4. Scroll down to the Participations section and click the "New participation" button to register the Athletes 4.
5. Enter the Name of the Athlete in the Search box and click on the loop sign to the Right.
6. Register the Category in Competition, the Event "and the Entry Type if known (if not known yet select "Individual Participant"; you must define the Team Members by 3:00 pm prior to the first day of the Event on site).
7. Click on the blue "+Add" button and the participant will be registered.
8. Repeat the steps 5 to 7 for any additional participants.
9. Any registration after the deadline of September 29, 2022 will be put on the Waiting List to be approved by the Scorer
10. Entry fees and penalties will be collected on site in cash.

**Non-Official Training on site**

It will be possible to train at the official venue from November 01, 2022 at a cost of US \$300.00 per hour. The dates and times for the training must be requested to the e-mail [info@mirandaski.com](mailto:info@mirandaski.com) with a deadline of September 01, 2022, must be paid through bank transfer, in the following account:

**Bank: Banco Edwards.**

2022 IWWF WATERSKI PANAMERICAN  
CHAMPIONSHIPS

**Bearer: Waldo Miranda Dömel**

**ID: 6.225.715-6**

**Current Account in US Dollars: 50006473305**

**Swift Code: BCHICLRM**

**Address: Camino el Alba #11865, local 101, Las Condes, Santiago.**

**Country: CHILE**

Send proof of transfer to [wmirandadomel@gmail.com](mailto:wmirandadomel@gmail.com) with a copy to [info@mirandaski.com](mailto:info@mirandaski.com)

**Official Training on site**

The official practice will be held on November 27<sup>th</sup> and November 28<sup>th</sup> 2022, at the same cost, however, the sets will be assigned in the same way for each country depending on the skiers and the events. Once they are designated, they must confirm participation in the official training, which must be canceled with a final deadline of October 31, through bank transfer, in the following account:

**Bank: Banco Edwards.**

**Bearer: Waldo Miranda Dömel**

**ID: 6.225.715-6**

**Current Account in US Dollars: 50006473305**

**Swift Code: BCHICLRM**

**Address: Camino el Alba #11865, local 101, Las Condes, Santiago.**

**Country: CHILE**

Send proof of transfer to [wmirandadomel@gmail.com](mailto:wmirandadomel@gmail.com) with a copy to [esquichile@gmail.com](mailto:esquichile@gmail.com)

**Alternative Site**

There will be also an alternative site for training which is Lago Chicureo. It will be possible to train at this site from November 16, 2022 at the cost of US\$ 300.00 per hour. Dates and times for training must be required by e-mail at:

[doctor@rubenrosenberg.cl](mailto:doctor@rubenrosenberg.cl)

The coordinates to get to this site using:

Federación de Esquí Náutico de Chile

2022 IWWF WATERSKI PANAMERICAN  
CHAMPIONSHIPS

<https://waze.com/ul/h66jdzg2t9>

The payment for the training on this site will be possible through a wire transfer.  
Below the bank account data:

**Bank: Banco Edwards Citi del Banco Chile**

**Bearer: Ruben Rosenberg Roffe**

**ID: 7.546.781-8**

**Current Account in US Dollars: 502-10-327004**

**Swift Code: BCHICLRM**

**Of. Estoril-Edwards**

**Address: Av. Las Condes 10247**

**Country: CHILE**

### **Meals**

Both breakfast and dinner for the officials will be at no cost at the Hotel NH.  
Lunches for all the officials, skiers, team captains and team coaches will be supplied at the site at no cost between November 29 to December 03, 2022.

### **Transport Airport – Official Hotel - Airport**

There will be transport free of charge from the Airport to the Official Hotel and vice versa to All Officials.

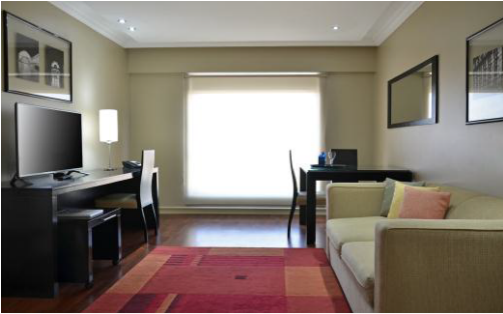
### **Transport Hotel NH – Lake Los Morros (Official Site)**

The Organizing Committee of the 2022 IWWF Waterski PanAmerican Championships will provide a bus transport for all the participants from the Official Hotel to the Lake Los Morros (Official Site) The bus schedules will be 7:00am from the hotel to the event venue and at 7:00pm from the venue to the official hotel, from November 27 to December 3, 2022.

### **Official Accommodation for Athletes and Officials**

Hotel NH Ciudad de Santiago \*\*\*\*

2022 IWWF WATERSKI PANAMERICAN  
CHAMPIONSHIPS



The official Hotel for the 2022 IWWF Waterski PanAmerican Championships is the **NH Ciudad de Santiago**. [www.nh-hotels.com](http://www.nh-hotels.com)  
NH Ciudad de Santiago is located in Av. Condell 40, Providencia, Santiago, Chile. It is just 25 minutes away from the International Airport in Santiago (Aeropuerto Internacional Arturo Merino Benítez) and 45 minutes away from the lake of competition.

Hotel NH Collection Plaza Santiago \*\*\*\*\*

As an alternative Hotel we recommend the **NH Collection Plaza Santiago** Hotel, located in Av. Vitacura 2610, Las Condes, Santiago, Chile. It is just 28 minutes away from the International Airport in Santiago (Aeropuerto Internacional Arturo Merino Benítez) and 45 minutes away from the lake of competition.



A s



2022 IWWF WATERSKI PANAMERICAN  
CHAMPIONSHIPS

an alternative accommodation, we offer the Hotel NH Collection Plaza Santiago, located at Av. Vitacura 2610, Las Condes, Santiago, Chile. It is located 28 minutes from the Arturo Merino Benítez International Airport and 45 minutes from the official headquarters.

Rates:

Rates in **NH Ciudad de Santiago** hotel are:

Single / Double Suite Room: USD **100** including breakfast and WIFI.

Rates in **NH Collection Plaza Santiago** hotel are:

Single/ Double Suite Room: USD **115** including breakfast and WIFI.

Rates in **NH Collection Casa Costanera** hotel are:

Single/ Double Suite Room: USD **215** including breakfast and WIFI.

- This rates are exempt of VAT Tax (19%) just for non-resident foreign passengers paying with US dollars.
- Rates includes: Buffet breakfast in the Restaurant, WIFI free, gym and sauna. Indoor pool and Jacuzzi at NH Collection Plaza Santiago.

Reservations

Reservations must be made through the central reservations office and the email address is: [reservas.ame@nh-hotels.com](mailto:reservas.ame@nh-hotels.com) please copy to [k.eguiluz@nh-hotels.com](mailto:k.eguiluz@nh-hotels.com)

Local phone number is: **+56 227609982** , In the subject indicate **Pan American Water Ski Championship**.

- Athletes and relatives must make reservations by **Monday September 1st, 2022**, indicating names, dates, times of arrival/departure (if possible), type of room and a credit card number as guarantee.
- Please be aware that November is high season in Santiago, Chile so rooms availability must be secured well in advance.

Payment

The hotel will consider that reservations are guaranteed by each passenger or delegation, payment can be made with credit card, cash or electronic bank transfer. The rooms for the Championship officers/judges will be arranged by the organization, including meals (no minibar, phone calls, bar, laundry, etc.) The Hotel accept VISA, MasterCard y AmericanExpress.

**Tentative Program.**

SUNDAY 11/27 OFFICIAL PRACTICE  
MONDAY 11/28

07:30 - 11:30 SLALOM  
11:40 - 17:40 JUMP  
17:50 - 20:10 TRICKS

**TRAINING**

|                |                  |           |
|----------------|------------------|-----------|
| <b>SLALOM</b>  | 6 MIN( 4 PASS)   | USD 30,00 |
| <b>SALTO</b>   | 5 MIN ( 2 JUMPS) | USD 25,00 |
| <b>FIGURAS</b> | 5 MIN ( UP-BACK) | USD 25,00 |

NOV. TUESDAY 11/29 08:00 - 17:00 hrs. SEMIFINALS SLALOM

UNDER 14 GIRLS  
UNDER 14 BOYS  
JUNIORS LADIES  
JUNIORS MEN  
UNDER 21 LADIES  
UNDER 21 MEN  
OPEN LADIES  
OPEN MEN

NOV. WEDNESDAY 11/30 08:00 - 15:00 hrs. SEMIFINALS TRICKS

UNDER 14 GIRLS  
UNDER 14 BOYS  
JUNIORS LADIES  
JUNIORS MEN  
UNDER 21 LADIES  
UNDER 21 MEN

2022 IWWF WATERSKI PANAMERICAN  
CHAMPIONSHIPS

OPEN LADIES  
OPEN MEN

NOV. WEDNESDAY 11/30 16:00 hrs. OPENING CEREMONY

NOV. THURSDAY 12/01 08:00 – 15:00 hrs. SEMIFINALS JUMP

UNDER 14 GIRLS  
UNDER 14 BOYS  
JUNIORS LADIES  
JUNIORS MEN  
UNDER 21 LADIES  
UNDER 21 MEN  
OPEN LADIES  
OPEN MEN

NOV. THURSDAY 12/01 15:20 hrs. TRICKS FINALS

UNDER 14 GIRLS  
UNDER 14 BOYS  
JUNIORS LADIES  
JUNIORS MEN

NOV. FRIDAY 12/02 08:00 – 09:00 TRICKS FINALS

UNDER 21 LADIES  
UNDER 21 MEN  
OPEN LADIES  
OPEN MEN

NOV. FRIDAY 12/02 09:20 – 14:20 SLALOM FINALS

UNDER 14 GIRLS  
UNDER 14 BOYS  
JUNIORS LADIES  
JUNIORS MEN  
UNDER 21 LADIES  
UNDER 21 MEN  
OPEN LADIES  
OPEN MEN

NOV. SATURDAY 12/03 09:00 – 14:00 JUMP FINALS

UNDER 14 GIRLS  
UNDER 14 BOYS  
JUNIORS LADIES  
JUNIORS MEN  
UNDER 21 LADIES

2022 IWWF WATERSKI PANAMERICAN  
CHAMPIONSHIPS

UNDER 21 MEN  
OPEN LADIES  
OPEN MEN

|                   |       |                     |
|-------------------|-------|---------------------|
| NOV. SUNDAY 12/04 | 20:00 | FINAL NIGHT BANQUET |
| NOV. SUNDAY 12/04 |       | AWARD CEREMONY      |

**The Opening Ceremonies, Award Ceremonies and Final Night Banquet will be free of charge to All Athletes, Team Officials and Technical Officials.**

**Those who wish to participate in the closing ceremony must cancel and register until November 30 at 4:00 p.m., with the organizing committee.**

**Official Towboat:**  
***SKI NAUTIQUE 2022***

**Towboat Speed Control System:**  
**Zero Off**

**Doping Control**

In accordance with the IWWF anti-Doping Rules, drugs controls will be conducted during the competition. By entering this competition, all athletes agree to be subject to doping control. Information about the IWWF Anti-Doping programme, the current IWWF AD Rules and links to the list of banned substances can be accessed on the following link:

<http://www.iwwfed.com/athletes/antidoping/>

**Safe Sport**

All officials, athletes, organizers, support staff etc must adhere to the IWWF Safe Sport Policy and commit to create a supportive and respectful environment for all. For more information, please refer to the following link:

<https://iwwf.sport/safe-sport/>

**Covid Protocols**

IWWF events will continue to respect and follow the local Covid protocols in effect.

**VISAS**

2022 IWWF WATERSKI PANAMERICAN  
CHAMPIONSHIPS

All Participants in the 2022 IWWF Waterski Pan American Championships coming from countries requiring VISA, must submit the invitation of the Organizing Committee and / or a letter issued from their own Federation, stating they will take part in the Championships, to the Chilean Consulate of their Country. VISA must be obtained before departure from the country of residence in order to avoid any problems at the Chilean immigration border or at any other transit border where a VISA is required.

**Judges to be confirmed.**



**INTENTION TO PARTICIPATE**  
**SUBMISSION DEADLINE SEPTEMBER 29, 2022**

The \_\_\_\_\_ Federation intends to participate in the 2022 IWWF Pan American Water Ski Championships.

We expect our team to consist of (fill in a number of competitors)

Gender: Under 14 - Juniors - Sub21- Open Total

Teams:

Ladies: \_\_\_\_\_

Males: \_\_\_\_\_

Specialists (maximum 2 per Federation):

Ladies: \_\_\_\_\_

Males: \_\_\_\_\_

Total competitors: \_\_\_\_\_

Captain \_\_\_\_\_ Delegate \_\_\_\_\_

2022 IWWF WATERSKI PANAMERICAN  
CHAMPIONSHIPS

**Person in charge (name and position):** \_\_\_\_\_

**Please send this form as soon as possible to [esquichile@gmail.com](mailto:esquichile@gmail.com) -  
[areatecnicaesquinautico@gmail.com](mailto:areatecnicaesquinautico@gmail.com)**

**This form will help to have the competition program, as well as to be able to  
distribute the practice times.**

2022 IWWF WATERSKI PANAMERICAN  
CHAMPIONSHIPS