



2023 SWISS TOUR NEUCHÂTEL July 08-09

2023 Bulletin information

ORGANISATION : [Ski Nautique Club Neuchâtel \(SNCN\)](#), [Swiss waterski and wake federation \(FSSW\)](#)

PHONE NUMBERS : SNCN +41 32 725 82 45 / +41 79 799 26 64

FSSW +41 79 919 13 29

E-MAIL : FSSW wakeboard@waterski.ch

EVENT WEB SITE : <https://iwwf.sport>

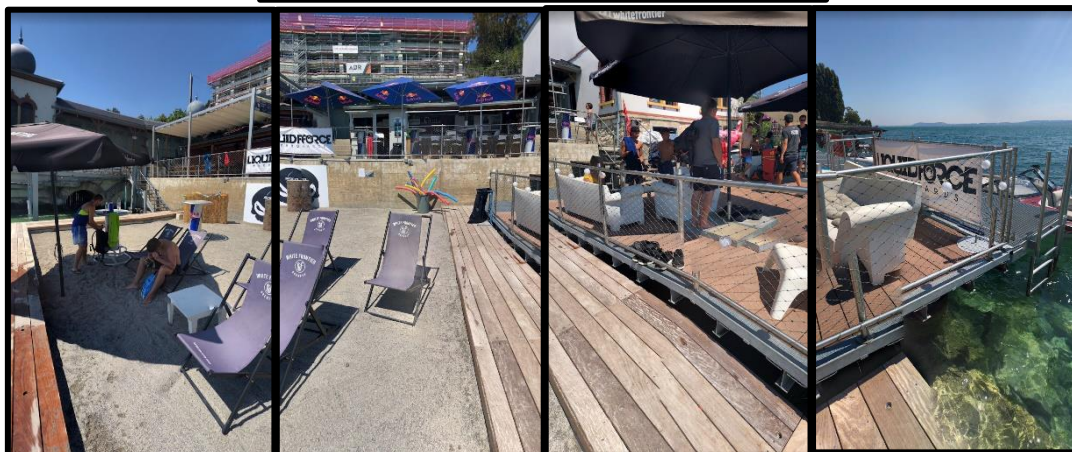
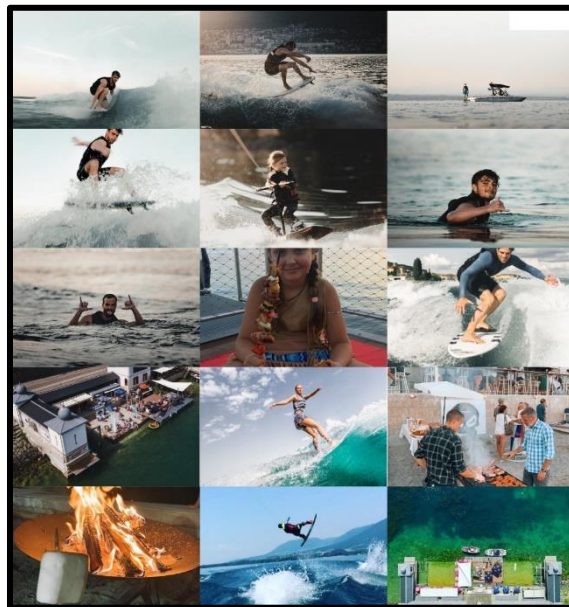
PLACE :

- **LE CLUB :**

Created in 1958, the SNCN is a sports club where you can practice water skiing, wakeboard, wakesurf and barefoot. The SNCN also aims to be open, relaxed and festive.

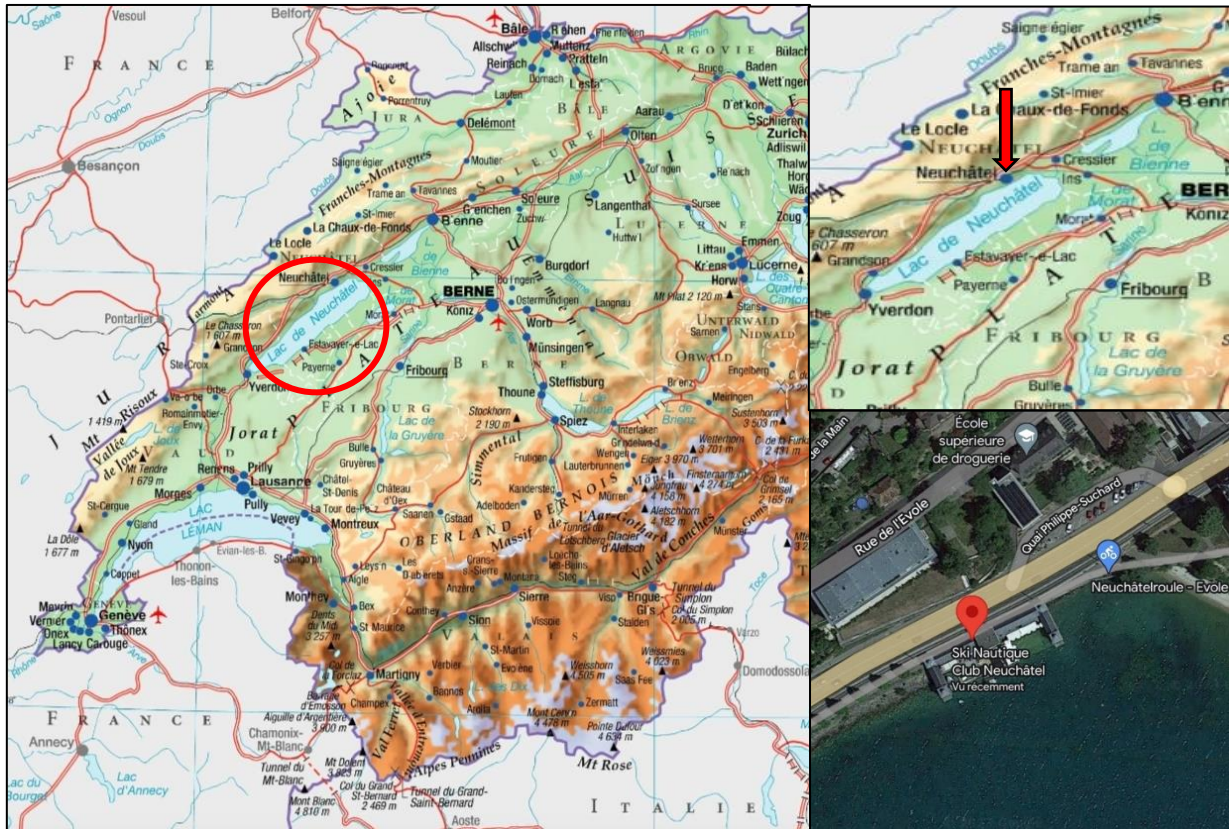
The SNCN is a wakeboard performance center recognized by Swiss Olympic since 2014, this certification is a guarantee of quality coaching, especially for young people. Recognized by Swiss Olympic, which pays particular attention to the technical and educational skills of coaches as well as the efforts made by the SNCN in favor of the next generation.

To date, just over 300 active and junior members have the pleasure of quenching their thirst for skiing and thrills, near the historic site of the « bain des dames ». Located near the city wonderful site serves as our clubhouse.



LOCALISATION :

- Quai Louis Perrier, 1
2001 Neuchâtel



REGISTRATION :

Registrations must be made from the FSSW / IWWF platform (<https://ems.iwwf.sport>). You will need to create your personal account if you are not yet registered in the system. Registration must be made before 05.07.23 for wakeboard competitors and 06.07.23 for wakesurf competitors.

1. Log in and select the menu at the top left.

2. Select the « my competitions » tab

3. Select « + New Participation »

Competition Date	Competition Name	Discipline	Category
17/09/2022	Championnats Genevois	Wakeboard Boat	Open
03/09/2022	Swiss Championships	Wakeboard Boat	Open
19/06/2022	Swiss Tour #1 - Morat	Wakeboard Boat	Open
19/09/2021	Swiss Tour #4 / Championnats Vaudois - Watersports Montreux	Wakeboard Boat	Open

4. In order to obtain the swiss dates, select filter « discipline and country », then « search » in order to refine the search.

5. Once the list has been refined, press the « select » tab on the date(s) you interested in.

Competition Date	Competition Name	Country	Code	Site	Discipline	Type / Homol.
25 Jun 2023	Swiss Tour #1 - Wake Up	CH	235U012	Genève	Wakeboard Boat	select
8 Jul 2023	Swiss Tour #2 - Vaudolind	CH	235U013	Naudolind Club Neuchâtel - SNCV	Wakeboard Boat	select

6. Select the « discipline, category » then « submit » in order to present your registration which will be validated later by the system.

PRICES :

Wakeboard and wakesurf registration is 35 CHF. It include participation in the competition as well as a voucher including a meal and a drink.

Payment will be made on site, on 08.07.23 (wakeboard) and 09.07.23 (wakesurf) before the start of the rider briefing.

ALIMENTATION / BOISSON :

Registration includes a meal voucher (a dish and a drink).

This same voucher is on sale on site for visitor and accompanying persons.

The club house has a bar and a barbecue area. The « Bain des dames » also has a restaurant within the building.

DEROULEMENT DU WEEK-END :

Samedi 8 juillet 2023 : Wakeboard

- 07h00 – 07h30 Registration confirmation
- 07h30 Riders briefing
- 08h00 – 12h00 : Qualifications
- 13h00 – 16h30 : Finals
- 17h30 : Awards
- Dès 17h30 Aperitif followed by the official evenement « ÔSwiss Tour »

Dimanche 9 juillet 2023 : Wakesurf

- 07h30 – 08h00 Registration confirmation
- 08h00 Riders briefing
- 08h30 – 12h00 : Qualifications
- 13h00 – 15h30 : Finals
- 16h30 Awards

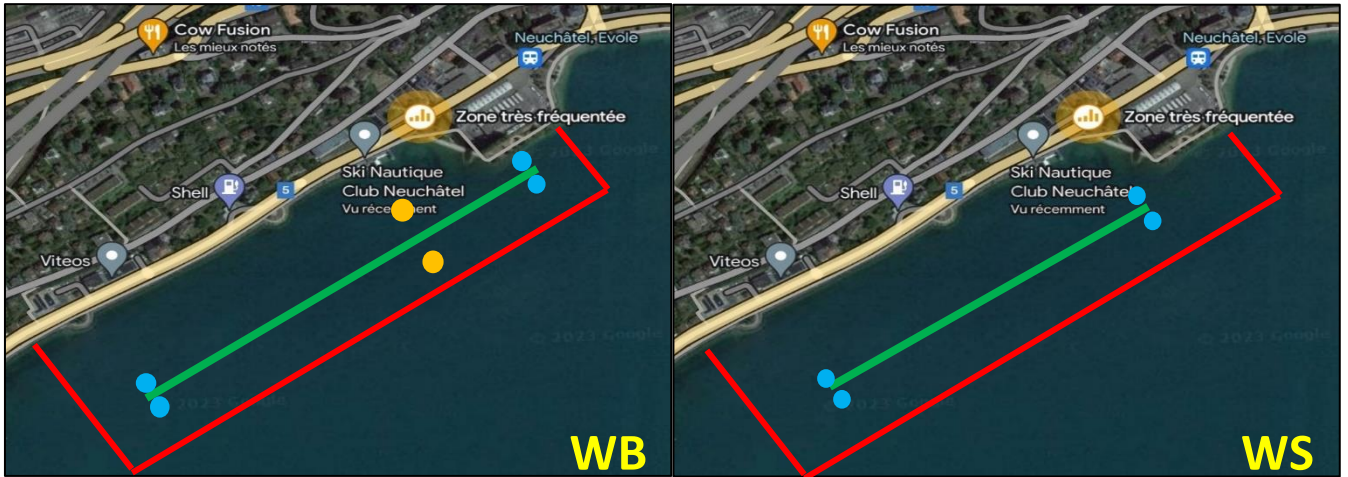
OFFICIAL TOWBOAT :

- MALIBU Wakesetter 23 VLX 2020 (Compétition)
- MALIBU Wakesetter 23 VLX 2019 (rescue)
- MALIBU Response TXi 2021 (rescue)



PARCOURS :

The competition will take the place in front of the SNCN club on the water ski course.



PARKING :

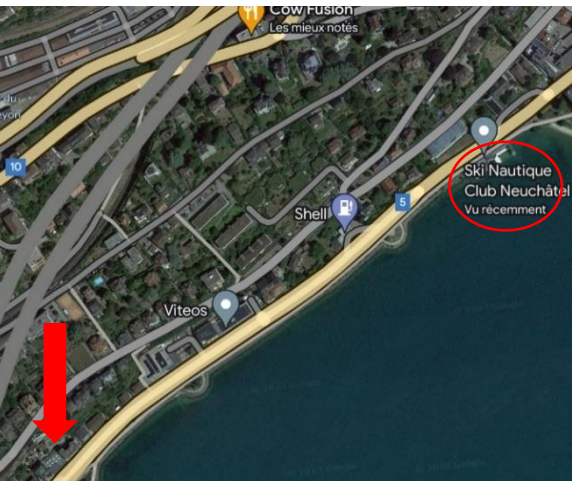
PARKING « école de droguerie »



PARKING (underground) « place Pury »



**PARKING dock Max-petitpierre 44
2000 Neuchâtel**



ACCOMODATION :

- Camping Yverdon plage
Avenue des iris 57
1400 Yverdon-les-bains
30 km du club, 28 min
- Camping communal Cudrefin
Route de Neuchâtel, 87
1588 Cudrefin
22 km du club, 20 min
- Hôtel les vieux toits
Croix d'or, 20
2068 Haute-rive
6 km du club, 12 min
- Neuchâtel city hôtel
Avenue de la gare, 15/17
2000 Neuchâtel
1.2 km du club, 3 min

TRANSPORT :

- Station Neuchâtel to 2place Pury » (4 min) BUS TN : n°107, 109, 421
- « Place Pury » to the club by feet (5 min)

